

















THE ECO-SYSTEM SERVICE CITY



Neil Sang



Ecosystem Services : A shared experience?

- | | |
|--|---|
|  1. Reduced Climate Impact |  9. Good-Quality Groundwater |
|  2. Clean Air |  10. A Balanced Marine Environment, Flourishing Coastal Areas and Archipelagos |
|  3. Natural Acidification Only |  11. Thriving Wetlands |
|  4. A Non-Toxic Environment |  12. Sustainable Forests |
|  5. A Protective Ozone Layer |  13. A Varied Agricultural Landscape |
|  6. A Safe Radiation Environment |  14. A Magnificent Mountain Landscape |
|  7. Zero Eutrophication |  15. A Good Built Environment |
|  8. Flourishing Lakes and Streams |  16. A Rich Diversity of Plant and Animal Life |



URBAN FORUM
 PRACTICE MEETS ACADEMIA
 8-12 APRIL 2019

Shared Interests?



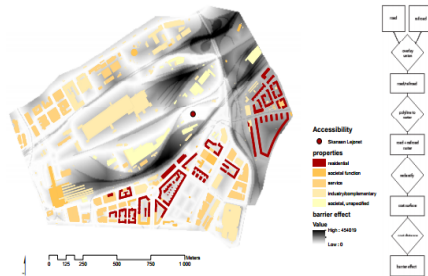
Stakeholder > Resident or Owner

Equitable Access?

”If you don't know where you are, it doesn't matter how you got there ”
 (Alice in Wonderland, Lewis Carol)

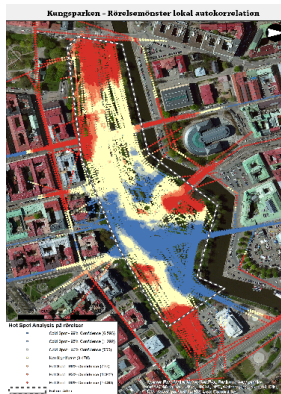
- Accessibility

today_accessibility&awareness



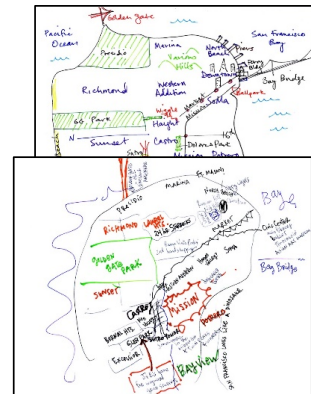
Nanna Nordin : Cost distance accessibility model of “Lejonet” in Gothenburg. From final project, Advance Digital Landscape Analysis with GIS, MSc Course, SLU.

- Use



Ode Sang, Å., Sevelin, G., Sang, N.,

- Salience



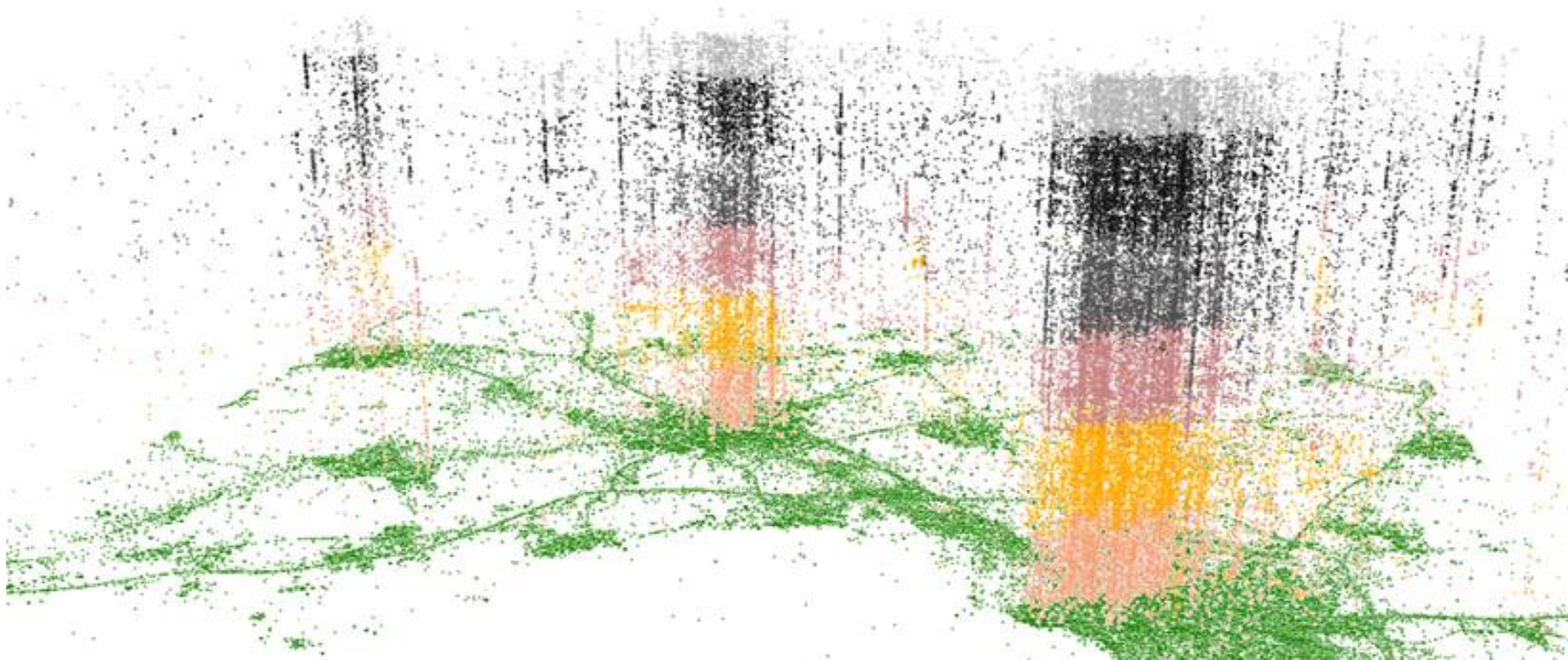
Berkley.edu, Mental Maps of Sanfransisco.

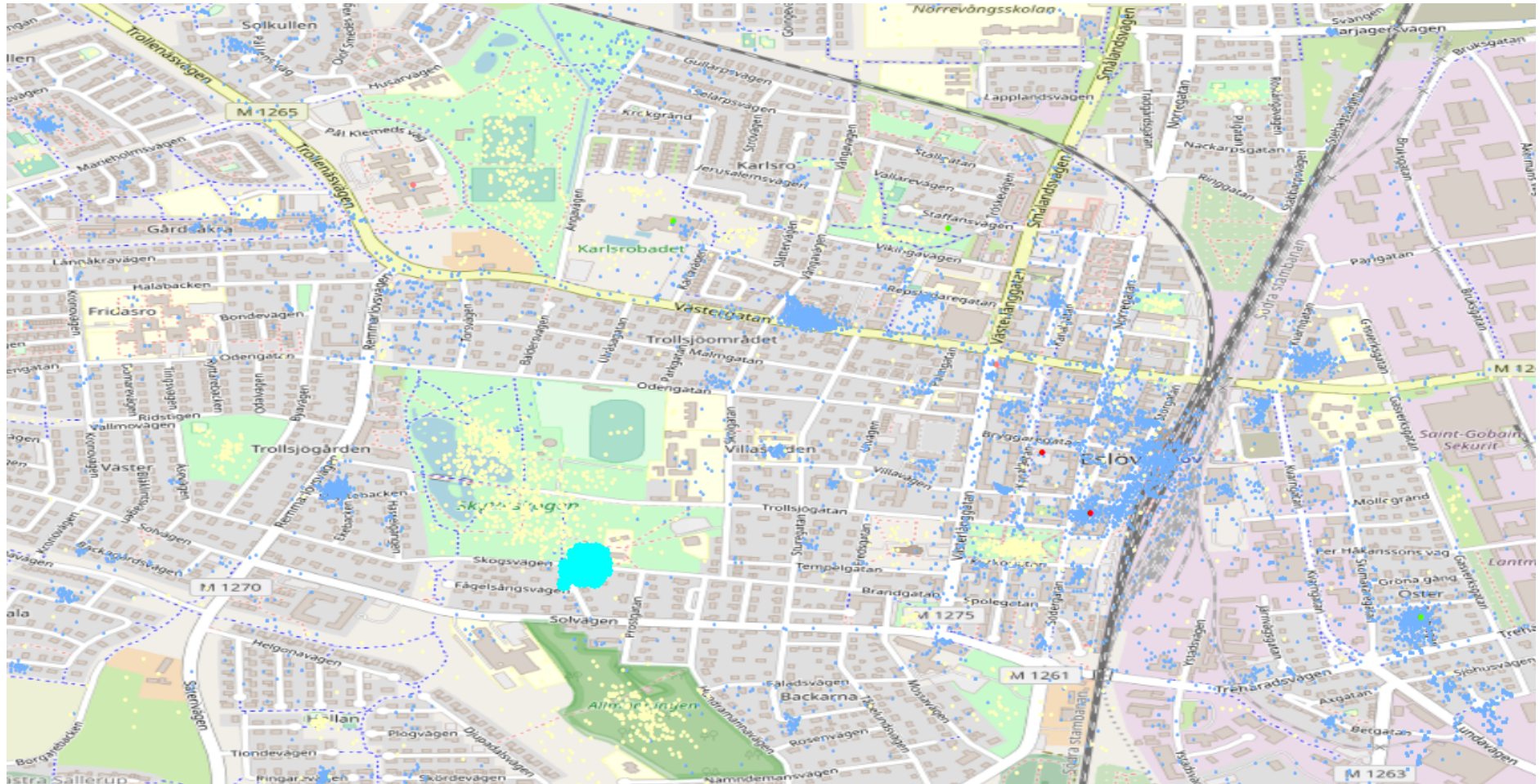
- Backdrop



© TrainMupp: Höje Å Water Park, Lund

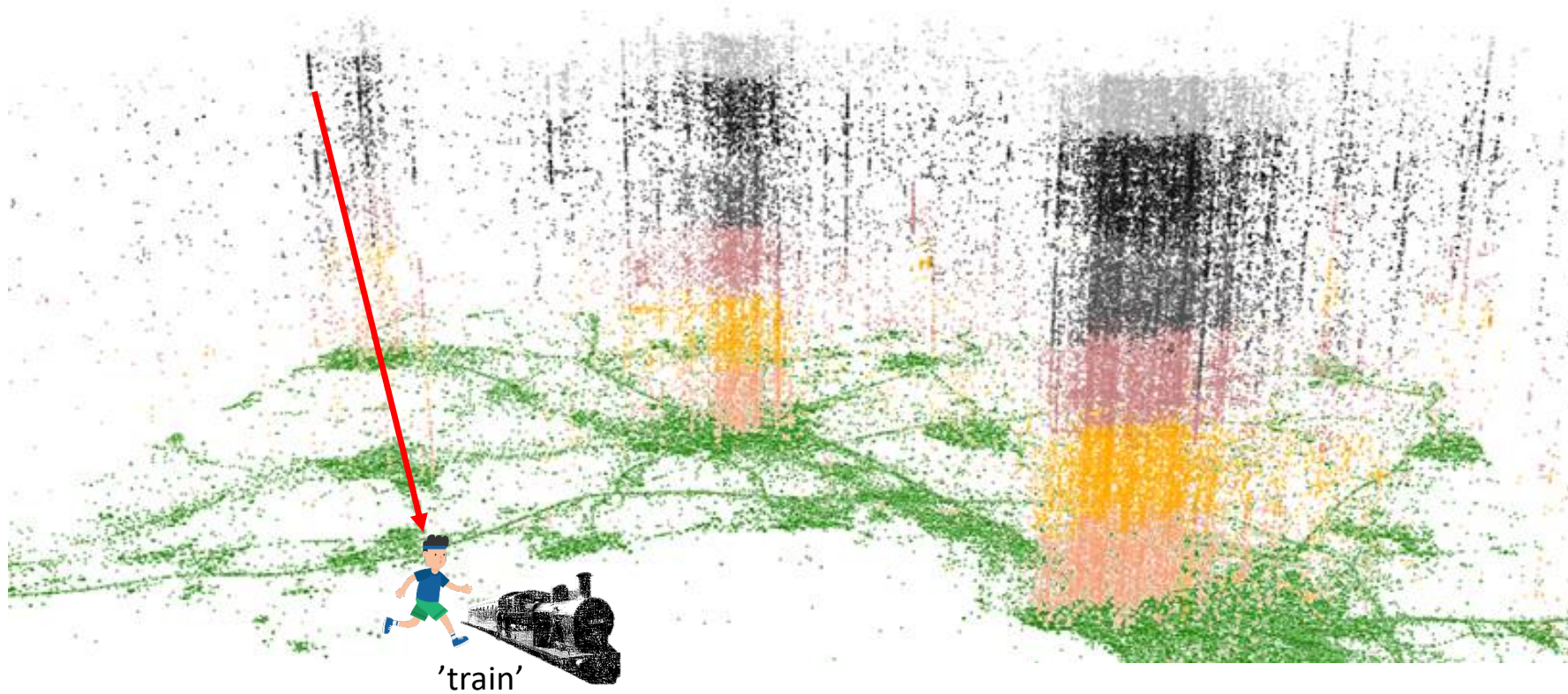
Big Data .. Ooooooh!



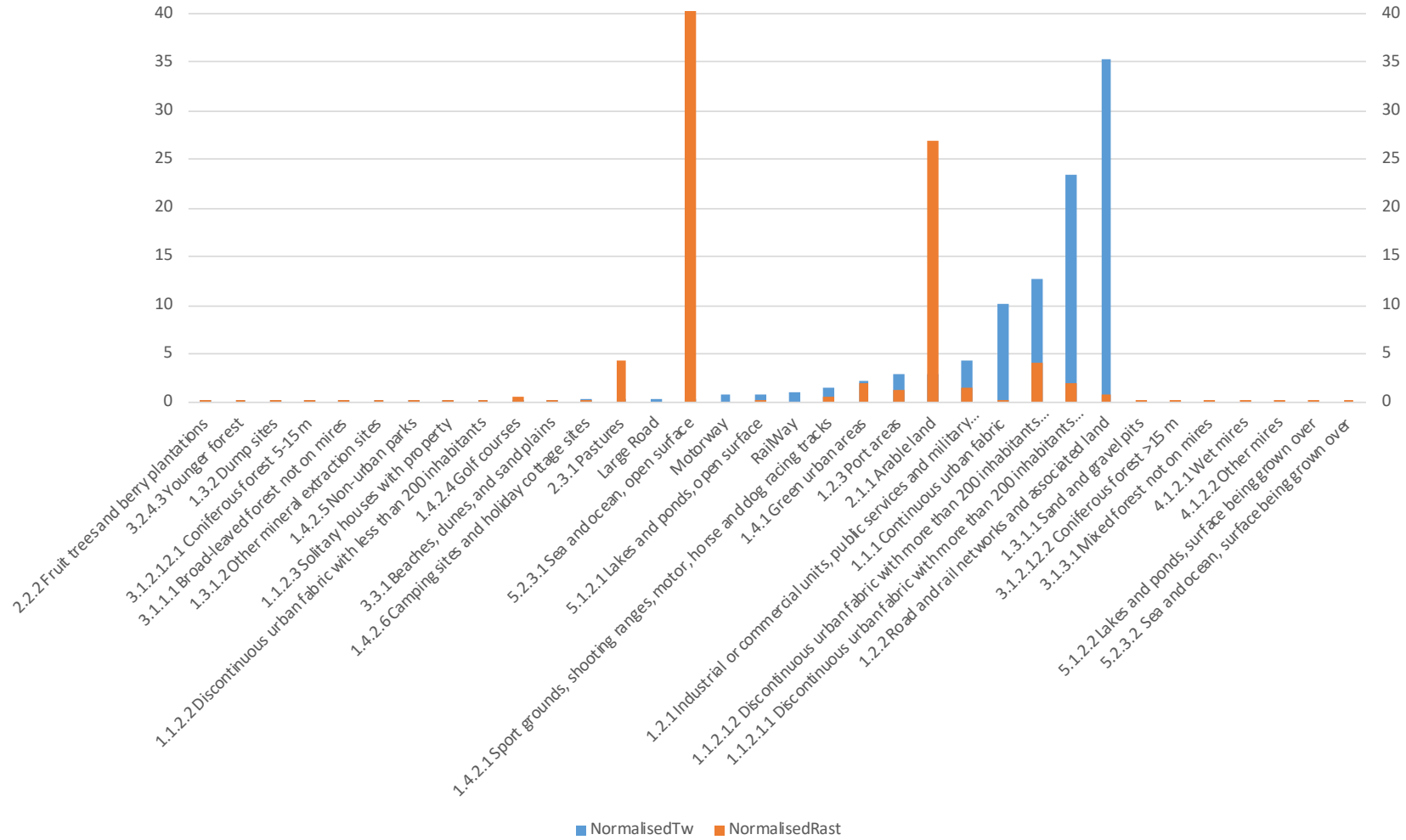


“Do know what? I just wasted your time, coz u read this meaningless tweet #MUCHLOVE”

Signal or Noise?



Percent of Tweets and Percent of Land by Landcover, Malmo



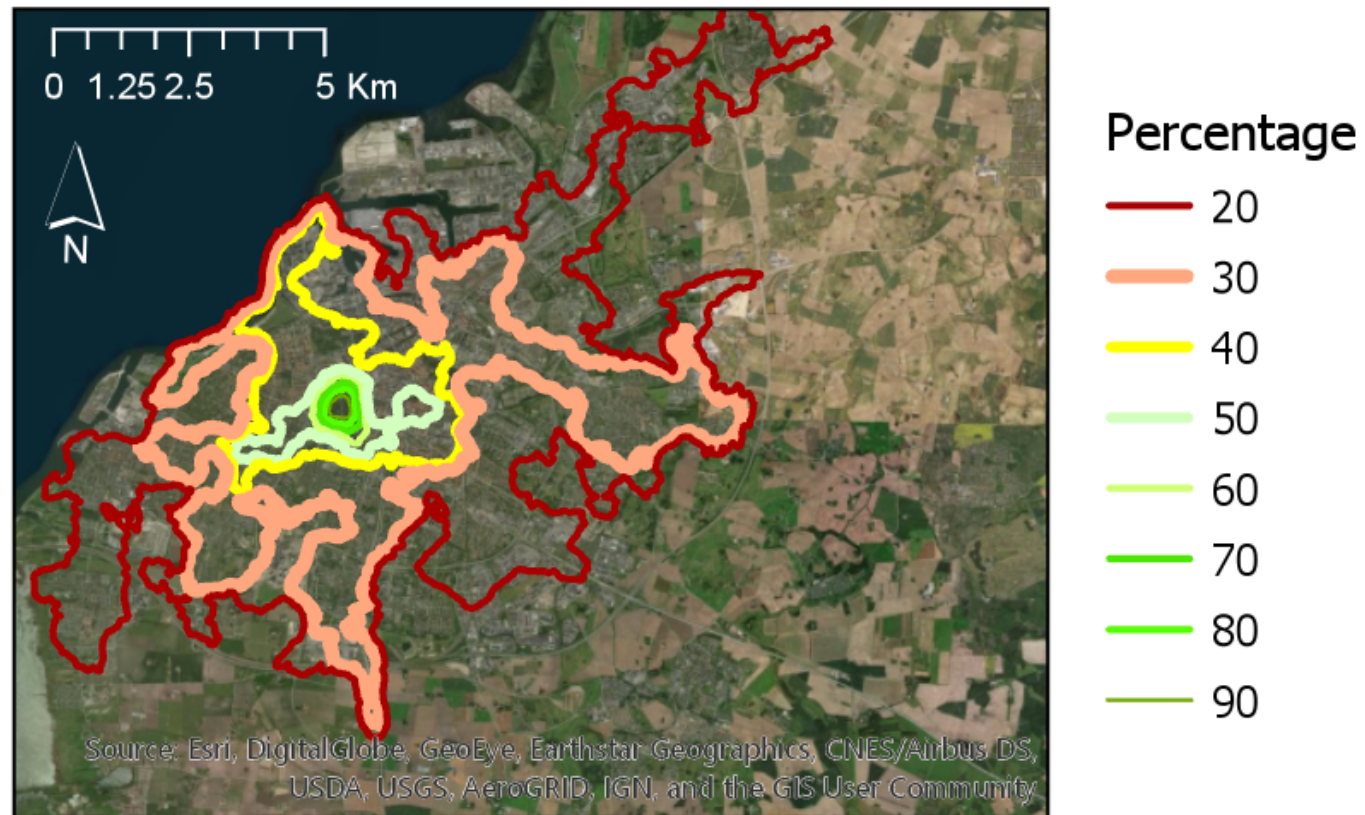
Not so much Data Mining... as data panning...



Pildamnsparcken



Percentage of Tweets Sent by Accounts With Tweets in Pildamsparken 2011-2016



Conclusions

- Twitter can provide insight into the 'reach' of a park in terms of the home range of its visitors
- i.e. what other spaces do they share?
- Issues of social justice : Twitter data can show impacts of poor accessibility
- Effects over time can be seen, e.g. seasons.
- Inclusive : Data on a broad demographic (not the usual suspects).

But

- More data for some types of places than others
- Exclusive : A broad demographic but not a representative one – giving digital data influence on planners thinking
- means giving those who access some (private) services influence.
- Thematic, Spatial and Temporal precision of results is limited by ethical as issues much as by data issues and the three are cumulative in respect of risk to privacy.

THANKYOU FOR LISTENING



neil.sang@slu.se @ansergis

